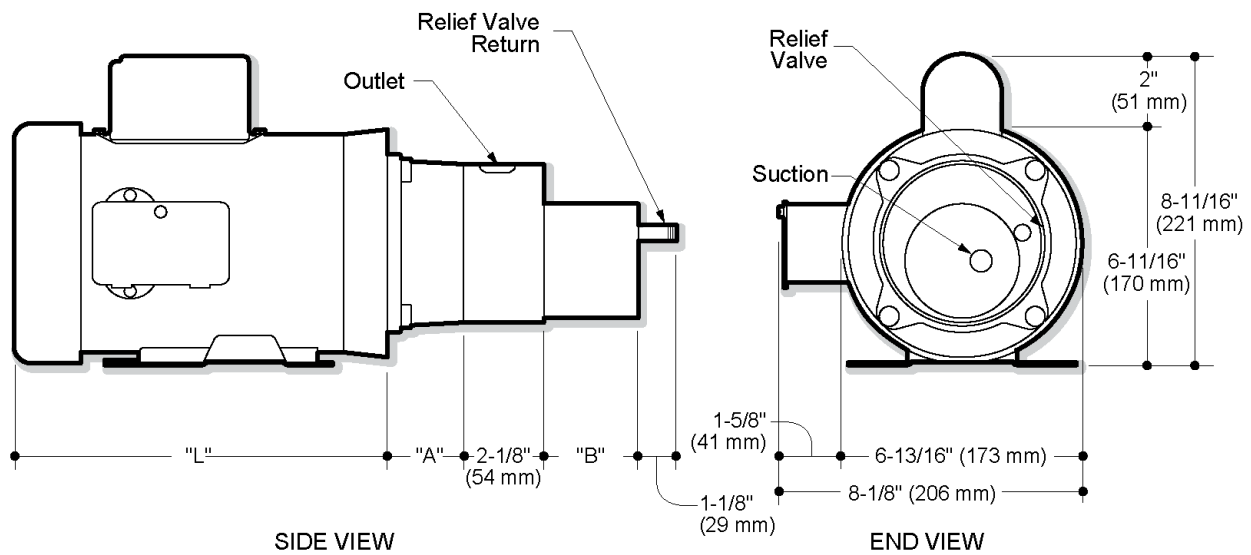
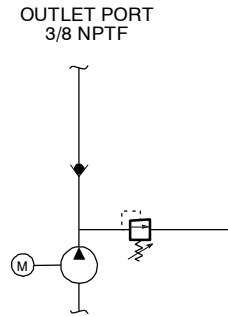


## 3.2 Model M-4326 (Formerly M-426)

### Description

- Pump Motor Unit
- Check Valve
- Externally Adjustable Relief Valve
- .375 Inch NPT Suction
- .375 Inch NPT Outlet
- .125 Inch NPT Relief Valve Return Port

### Schematic



"L" dimension shown for 08751 motor is 10-11/16" (271 mm)  
 "A" dimension for standard 01605 adapter is 2-5/32" (55 mm)  
 "A" dimension for optional 01615 adapter is 3-11/32" (85 mm)  
 "B" pump dimensions vary depending on pump used  
 Dimensions will vary according to motor output and manufacturer

### How to Order Your M-4326 Power System

Comprehensive information may be found on the page referenced below each selection category.

Pump	Motor	Mounting Position	Accessories
Ref. Page 9	Ref. Page 10		Ref. Page 20